



**CERTOMAT<sup>®</sup>**  
Benchtop shaker with  
magnetic drive

**DJB Labcare - Laboratory Equipment Specialist**  
[info@djblabcare.co.uk](mailto:info@djblabcare.co.uk) [www.djblabcare.co.uk](http://www.djblabcare.co.uk)  
01908 612598

## CERTOMAT® U Bench top shaker with magnetic drive

The strong magnetic drive of this benchtop shaker makes it an optimal tool for nearly all shaking work in a lab.

As a two-in-one unit, it allows the conversion of orbital motion into longitudinal mode.

The CERTOMAT® U is a proven construction designed for long life without wear and tear.

The powerful magnetic drive with micro-processor control stands for a quiet run.

The shaking speed is set by up and down keys. A LED indicates the actual value.

The memory function allows to re-establish the last set-point after power failure and restoration. Optical and acoustic alert in case of malfunction.

Safe and fast fixation of the tray by means of a lever makes the change of trays easy.

Numerous types of trays with fixed clamps and two sizes of universal trays for individual mounting of many different accessories cover nearly all needs.

In combination with the incubation hood CERTOMAT® H, the CERTOMAT® U can be used for temperature-controlled experiments from ambient +8 °C to +60 °C.

The version with cooling coil, CERTOMAT® HK, allows temperatures down to 10 °C in connection with an external cooling unit.

### Benefits

Silent run

Strong magnetic drive

Orbital and longitudinal motion convertible

Memory function

Numerous accessories

Safe and quick tray fixation by fixing lever

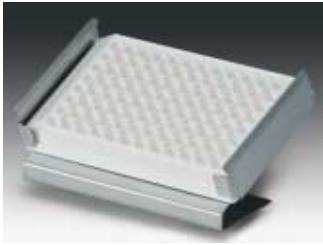


DJB Labcare - Laboratory Equipment Specialist  
info@djblabcare.co.uk www.djblabcare.co.uk  
01908 612598

## Accessories



Reference	Description
	<b>Tray type E (420×420 mm) equipped with stainless steel clamps for Erlenmeyer flasks</b>
885 3533	39 clamps for flasks 100 ml
885 3568	20 clamps for flasks 250 ml
885 3584	14 clamps for flasks 500 ml
885 3606	9 clamps for flasks 1,000 ml
	<b>Tray type E (420×420 mm) equipped with plastic clamps for Erlenmeyer flasks</b>
885 3688	39 clamps for flasks 100 ml
885 3666	19 clamps for flasks 250 ml
885 3677	14 clamps for flasks 500 ml
	<b>Tray type F (800×420 mm) equipped with stainless steel clamps for Erlenmeyer flasks</b>
885 3738	74 clamps for flasks 100 ml
885 3762	40 clamps for flasks 250 ml
885 3789	26 clamps for flasks 500 ml
885 3800	15 clamps for flasks 1,000 ml
	<b>Universal tray to be completed with clamps, racks or mounting system</b>
885 3002	Type EU (420×420 mm)
885 3037	Type FU (800×420 mm)
	<b>Stainless steel clamps for Erlenmeyer and Fernbach flasks</b> (maximum number of clamps for tray type EU/type FU)
885 4505	for flasks 25 ml (max. 49/98)
885 4513	for flasks 50 ml (max. 48/96)
885 4521	for flasks 100 ml (max. 24/48)
885 4556	for flasks 250 ml (max. 17/39)
885 4572	for flasks 500 ml (max. 12/26)
885 4599	for flasks 1,000 ml (max. 8/17)
885 4610	for flasks 2,000 ml (max. 4/9)
885 4629	for flasks 3,000 ml (max. 4/8)
885 4637	for flasks 5,000 ml (max. 2/6)
885 4564	for Fernbach flasks 450 ml (max. 8/15)
885 4600	for Fernbach flasks 1,800 ml (max. 1/6)
885 4640	for Fernbach flasks 2,800 ml (max. 1/6)
	<b>Plastic clamps reinforced with glass fibre</b> (maximum number of clamps for tray type EU/type FU)
885 4700	for flasks 100 ml (max. 24/48)
885 4711	for flasks 250 ml (max. 18/39)
885 4722	for flasks 500 ml (max. 12/26)
885 4733	for flasks 1,000 ml (max. 8/17)
	<b>Hinged racks for test tubes</b> (4 racks max. on tray EU, 8 racks max. on tray FU)
885 3134	for 64 tubes Ø 14 mm
885 3142	for 42 tubes Ø 16 mm
885 3150	for 36 tubes Ø 18 mm
885 3169	for 33 tubes Ø 20 mm
885 3185	for 20 tubes Ø 25 mm
885 3177	for 16 tubes Ø 30 mm
	<b>Hinged racks for centrifugation tubes</b> (4 racks max. on tray EU, 8 racks max. on tray FU)
885 3088	for 42 tubes Ø 16 mm
885 3096	for 36 tubes Ø 18 mm
885 3193	for 33 tubes Ø 20 mm
885 3240	for 16 tubes Ø 30 mm



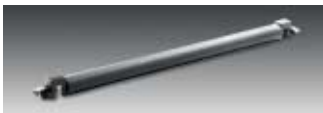
Reference	Description
885 0321	<b>Holders for microtiter plates, stainless steel</b> for 1 standard 96-well plate or deepwell plate standard plates: max. 12 holders on EU tray, 21 holders on FU tray deepwell plates: max. 9 holders on EU tray, 18 holders on FU tray



886 4497	<b>Sticky tape for universal trays</b> Standard, Width 30 mm, roll of 50 m
886 0419	Premium, Width 30 mm, roll of 10 m, for repeated use



886 4470	<b>Anti-skid layer (not shown)</b> 380×450 mm, for individual cut
885 4238	<b>Universal mounting system</b> Basic element type B-2 for tray EU
885 4246	Basic element B-3 for tray FU
885 4254	Clamping rod, type U for mounting systems B-2 and B-3



886 1005	<b>Shaking flasks DURAN, Erlenmeyer type,</b> <b>3 baffles at 120°, straight rim</b> Erlenmeyer flasks 300 ml, pack of 10
886 1013	Erlenmeyer flasks 500 ml, pack of 10
886 1021	Erlenmeyer flasks 1,000 ml, pack of 10
886 1022	Erlenmeyer flasks 2,000 ml, pack of 10



886 1064	<b>Shaking flasks, DURAN, Erlenmeyer type,</b> <b>3 baffles at 120°, straight rim, connector GL 14</b> Erlenmeyer flasks 300 ml, pack of 10
886 1072	Erlenmeyer flasks 500 ml, pack of 10
886 1080	Erlenmeyer flasks 1,000 ml, pack of 10



886 1099	<b>Caps for Erlenmeyer flasks, straight rim</b> Cap Aluminium, pack of 10
886 1102	Cap Stainless steel, pack of 10



886 0998	<b>Shaking flasks, DURAN, Erlenmeyer type,</b> <b>3 baffles at 120°, narrow neck for plug</b> Erlenmeyer flasks 500 ml, pack of 10
----------	--

DJB Labcare - Laboratory Equipment Specialist  
info@djblabcare.co.uk www.djblabcare.co.uk  
01908 612598

## Technical Data

### Ordering data (without tray and other accessories)

230 V/50–60 Hz	886 3121	CERTOMAT® U
115 V/50–60 Hz	886 0238	CERTOMAT® U

### Technical data

Mechanical	Shaking speed:	40 to 350 rpm (E/EU tray) 40 to 250 rpm (F/FU tray)
	Deviation of speed:	±1% of max. value
	Shaking mode:	orbital and longitudinal, convertible
	Amplitude:	25 mm
Drive	Drive:	magnetic drive
	Control:	via microprocessor
Trays	Recommended trays:	E/EU (420×420 mm) F/FU (420×800 mm)
	Maximal load:	all trays with accessories out of Sartorius-program
	Tray fixation:	by locking handle
Operation	Adjustment:	membrane key pad
	Indication:	alphanumeric LED
Safety	Memory function:	automatic restart after power failure
	Alarm:	acoustic in case of malfunction
Environmental conditions	Admissible temperature:	from +10 °C to +60 °C
	Relative humidity:	from 10% to 90% not condensing
Electrical	Power supply:	230 V/50–60 Hz   115 V/50–60 Hz
Dimensions	(W × H × D):	480 × 130 × 520 mm
	Weight (without tray):	52 kg

Sartorius AG  
Weender Landstrasse 94-108  
37075 Goettingen, Germany

Phone +49.551.308.0  
Fax +49.551.308.3289

[www.sartorius.com](http://www.sartorius.com)

Sartorius BBI Systems GmbH  
Schwarzenberger Weg 73-79  
34212 Melsungen, Germany

Phone +49.5661.71.3400  
Fax +49.5661.71.3702

[www.sartorius-bbi-systems.com](http://www.sartorius-bbi-systems.com)

Sartorius North America Inc.  
131 Heartland Blvd.  
Edgewood, New York 11717, USA

Phone +1.631.254.4249  
Toll-free +1.800.3687178  
Fax +1.631.254.4253

Sartorius BBI Systems, Inc.  
2800 Baglyos Circle  
Bethlehem, PA 18020, USA

Phone +1.610.866.4800  
Fax +1.610.866.4890

Sartorius Ltd.  
Longmead Business Park  
Blenheim Road, Epsom  
Surrey, KT19 9 QQ, U.K.

Phone +44.1372.737159  
Fax +44.1372.726171

Sartorius S.A.  
4, rue Emile Baudot  
91127 Palaiseau Cedex, France

Phone +33.1.6919.2100  
Fax +33.1.6920.0922

Sartorius S.p.A.  
Via dell'Antella, 76/A  
50011 Antella (FI), Italy

Phone +39.055.63.40.41  
Fax +39.055.63.40.526

Sartorius, S.A.  
C/Isabel Colbrand 10-12  
Planta 4, Oficina 121  
Polígono Industrial de Fuencarral  
28050 Madrid, Spain

Phone +34.91.3586091  
Fax +34.91.3588804

Sartorius Technologies N.V.  
Luchthavenlaan 1-3  
1800 Vilvoorde, Belgium

Phone +32.2.756.0670  
Fax +32.2.756.0681

Sartorius K.K.  
KY Building, 8-17  
Kitashinagawa 1-chome  
Shinagawa-ku  
Tokyo 140-0001, Japan

Phone +81.3.3740.5407  
Fax +81.3.3740.5406

Specifications subject to change  
without notice.

Printed in Germany on paper that has been  
bleached without any use of chlorine.

W/sart-000 · G

Publication No.: SB-1017-e05021

Order No.: 85030-514-34

**DJB Labcare - Laboratory Equipment Specialist**  
**info@djblabcare.co.uk** **www.djblabcare.co.uk**  
**01908 612598**