

27
YEARS OF
EXCELLENCE

CENTURION
SCIENTIFIC LIMITED

PrO-Vet Centrifuges



Welcome To Our New PrO-Vet Range

Designed with the busy veterinarian in mind and derived from our long running LED and LCD display centrifuges spanning over 25 years of Centrifuge manufacturing.

Simplicity of use is paramount.

All are supplied with rotor or a combination thereof.

If the PrO-Vet does not cover your needs please look at our global web site.

Centurion have the largest range of benchtop centrifuges in the world.

Ease of Use

Using four parameters, you choose your speed and press go. One of four LID lights will glow to show your selection. Once finished, a buzzer will sound and you simply press "Lid Open" to retrieve your samples. Locking of the lid during a run is standard to all of this range.

We take safety very seriously and **ALL** centrifuges have locked lid protection, you cannot open till the run has stopped. See our user, standard and safety features on the page opposite.

From the start of 2015 all Centrifuges and rotors have a **3 year warranty** That is how confident we are of our quality and resilience

We reserve the right to make changes with ongoing research and development

PrO-Vet Veterinary Centrifuges

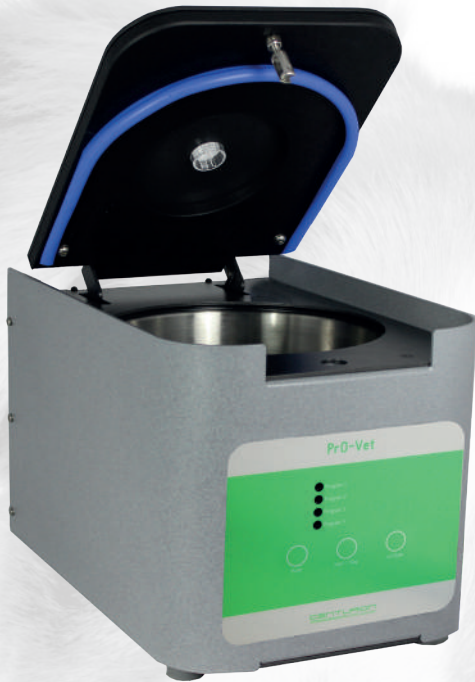
User features to PrO-Vet	Advantages
LID display with four memories	Clarity & ease of use
Fixed acceleration & deceleration rates	Sample assistance
4 programs of speed and time	Multi users
Sound <60Db	Quiet
Orientation acceleration rate	Prevents initial sample side deposits
Standard to PrO-Vet	Advantages
Extra thick stainless steel bowl	Easy, clean & rust free
Port to Lid	Tachometer speed certification
Alloy & Steel frame	Strong, light & quiet
World Leading Industrial grade inverter	Reliability, strength
Best quality European brushless motor	Quiet, cool & reliable
High technology airflow (ambient mode)	Cooler running
Safety features to PrO-Vet	Advantages
Multi point lid locking	Lid Safety
Emergency lid release	Power failure release
Lid springs	Lid dropping safety
Lid lock detection	To run, lid must be shut
Imbalance detection	Easy "eye" volume loading
Overspeed Sensor	Safe detection of speed
Set inverter values	Electronic safety of speed
Barrier ring	Extra metal protection of chamber
Motor overheat sensor	Safe motor protection

Centurion Scientific Ltd Centrifuges comply to all relevant EU standards of Quality and Medical Devices IEC 61010 and CE conformity test marks Emission, immunity to EN/IEC 61326-1, Class B

Index

Page 4	PrO-Vet HE Haematocrit centrifuge & rotors
Page 5	PrO-Vet Serum centrifuge & rotors
Page 6	PrO-Vet PCVs Haematocrit / serum rotors
Page 7	PrO-Vet LA centrifuge & rotors
Page 8	PrO-Vet Multi centrifuges and rotors
Page 9	PrO-Vet Cyto centrifuge, rotors & accessories
Page 10	PrO-Equine centrifuge, rotor & adaptors
Page 11	Adaptors available to above

PrO-Vet HE



Display indicative only

Dims (HWD mm)	235x235x350
Weight (Kg)	13 (without rotor)
Power (watts)	125
Rotor	BRK5401 & BRK5424

Programs	Speed	Time
1. Haematocrit (Pcv)	12,000Rpm	300 Secs
2. Serum 1	6,000Rpm	600 Secs
3. Serum 2	5,000Rpm	300 Secs
4. Urine	3,500Rpm	300 Secs

Haematocrit & Microtube Rotor



Rotor **BRK5401**

Rotor type (ml)	24 x capillary & 12 x 2
Tube size max (mm)	2x75 & 11x40
Minimum speed (Rpm)	500
Maximum speed (Rpm)	12,000
Maximum RCF (G)	13,500
Radius max (mm)	85
Sample tube angle (°)	0 & 60
Acceleration time (secs)	30
Deceleration time (secs)	30
Autoclaveable (frequency)	121°C (10)



Rotor **BRK5424**

Rotor type (ml)	24x2
Tube size max (mm)	11x50
Minimum speed (Rpm)	500
Maximum speed (Rpm)	12,000
Maximum RCF (G)	13,500
Radius max (mm)	85
Sample tube angle (°)	45
Acceleration time (secs)	20
Deceleration time (secs)	20
Autoclaveable (frequency)	121°C (10)

Accessories

Included



8003 PCV Reader

Included



8014 Sealing Clay

Available

Pack 1000

8012 Plain capillary tubes

Available

Pack 1000

8013 Heperanised capillary tubes

PrO-Vet Serum



Display indicative only

Dims (HWD mm)	235x235x350
Weight (Kg)	13 (without rotor)
Power (watts)	125
Rotor	BRK5408

Programs	Speed	Time
1. Serum 1	6,000Rpm	180 Secs
2. Serum 2	6,000Rpm	240 Secs
3. Serum 3	5,000Rpm	300 Secs
4. Urine	3,500RPM	300 Secs

Serum Rotor to 15ml

Reducers available for 5 & 10ml



Rotor	BRK5408
Rotor type (ml)	8x15
Tube size max (mm)	17x120
Minimum speed (Rpm)	500
Maximum speed (Rpm)	6,000
Maximum RCF (G)	3,500
Radius max (mm)	85
Sample tube angle (°)	30
Acceleration time (secs)	30
Deceleration time (secs)	30
Autoclaveable (frequency)	121°C (10)

Reducers



Rotor	BRK5408
Part number	RM05
Tube size max (mm)	13x80
Part number	RM10
Tube size max (mm)	16x100

PrO-Vet PCVs



Display indicative only

Dims (HWD mm)	235x235x350
Weight (Kg)	13 (without rotor)
Power (watts)	125
Rotor	BRK5401 & BRK5408

Programs 5401	Speed	Time
1. Haematocrit (Pcv)	12,000Rpm	300 Secs
2. Serum 1	6,000Rpm	600 Secs
3. Serum 2	5,000Rpm	300 Secs
4. Urine	3,500RPM	300 Secs

Programs 5408	Speed	Time
1. Serum 1	6,000Rpm	180 Secs
2. Serum 2	6,000Rpm	240 Secs
3. Serum 3	5,000Rpm	300 Secs
4. Urine	3,500Rpm	300 Secs

Serum (15ml max) & Haematocrit Rotor



Included

Rotor **BRK5401**

Rotor type (ml)	24 x capillary & 12 x 2
Tube size max (mm)	2x75 & 11x40
Minimum speed (Rpm)	500
Maximum speed (Rpm)	12,000
Maximum RCF (G)	13,500
Radius max (mm)	85
Sample tube angle (°)	0 & 60
Acceleration time (secs)	30
Deceleration time (secs)	30
Autoclaveable (frequency)	121°C (10)



Included

Rotor **BRK5408**

Rotor type (ml)	8x15
Tube size max (mm)	17x120
Minimum speed (Rpm)	500
Maximum speed (Rpm)	6,000
Maximum RCF (G)	3,500
Radius max (mm)	85
Sample tube angle (°)	30
Acceleration time (secs)	30
Deceleration time (secs)	30
Autoclaveable (frequency)	121°C (10)

Accessories

Included



8003 PCV Reader

Included



8014 Sealing Clay

Available

Pack 1000

8012 Plain capillary tubes

Available

Pack 1000

8013 Heperanised capillary tubes

PrO-Vet LA



Display indicative only

Dims (HWD mm)	275x325x470	
Weight (Kg)	22 (without rotor)	
Power (watts)	175	
Rotor	BRK5508M & BRK5412/ BRK5406	
Programs 5508M	Speed	Time
1. Serum 1	4,000Rpm	400 Secs
2. Serum 2	3,500Rpm	300 Secs
3. Serum 3	3,000Rpm	300 Secs
4. Urine	2,500RPM	400 Secs
Programs 5412/06	Speed	Time
1. Serum 1	4,000Rpm	480 Secs
2. Sperm	3,000Rpm	840 Secs
3. Faeces	3,000Rpm	600 Secs
4. Urine	2,750Rpm	500 Secs

Swing Out Rotor



Rotor	BRK5508M
Rotor type (ml)	8x15
Tube size max (mm)	15x110
Minimum speed (Rpm)	500
Maximum speed (Rpm)	4,000
Maximum RCF (G)	2,200
Radius max (mm)	85
Sample tube angle (°)	30
Acceleration time (secs)	30
Deceleration time (secs)	30
Autoclaveable (frequency)	121°C (10)

Fixed Angle Rotor 12x15 or 6x50ml

Choice of either



Rotor	BRK5412	BRK5406
Rotor type (ml)	12x15	6x50
Tube size max (mm)	17x120	30x120
Minimum speed (Rpm)	500	500
Maximum speed (Rpm)	6,000	6,000
Maximum RCF (G)	3,800	3,800
Radius max (mm)	95	95
Sample tube angle (°)	30	30
Acceleration time (secs)	25	25
Deceleration time (secs)	25	25
Autoclaveable (frequency)	121°C (10)	121°C (10)

Reducers



Rotor	BRK5412	BRK5406
Part number	RM05	RM15
Tube size max (mm)	13x80	17x120
Part number	RM10	RM25
Tube size max (mm)	16x100	25x100

PrO-Vet Multi



Display indicative only

Dims (HWD mm)	275x325x470
Weight (Kg)	22 (without rotor)
Power (watts)	175
Rotor	BRK5505 & BRK5401

Programs 5505	Speed	Time
1. Sperm 1	3,500Rpm	480 Secs
2. Sperm 2	1,275Rpm	840Secs
3. Faeces	3,000Rpm	600 Secs
4. Urine	3,500Rpm	300 Secs

Programs 5401	Speed	Time
1. Haematocrit (Pcv)	12,000Rpm	300 Secs
2. Serum 1	6,000Rpm	600 Secs
3. Serum 2	5,000Rpm	300 Secs
4. Urine	3,500RPM	300 Secs

Swing Out Rotor



Included

Rotor **BRK5505**

Rotor type (ml)	4x100
Tube size max (mm)	45x100
Minimum speed (Rpm)	500
Maximum speed (Rpm)	4,000
Maximum RCF (G)	2,200
Radius max (mm)	123
Sample tube angle (°)	0
Acceleration time (secs)	25
Deceleration time (secs)	25
Autoclaveable (frequency)	121°C (20)

2 sets of 4 Adaptors included - See page 11

Haematocrit (Pcv) & 2ml



Included

Rotor **BRK5401**

24 x capillary & 12 x 2
2x75 & 11x40
500
12,000
13,500
85
0 & 60
30
30
121°C (10)

Accessories

Included



8003 PCV Reader

Included



8014 Sealing Clay

Available

Pack 1000

8012 Plain capillary tubes

Available

Pack 1000

8013 Heperanised capillary tubes

PrO-Vet Cyto



Display indicative only

Dims (HWD mm)	275x325x470
Weight (Kg)	22 (without rotor)
Power (watts)	175
Rotor	BRK4420 & BRK4430

Programs	Speed	Time Slow
1. Low	200Rpm	600 Secs
2. Medium	500Rpm	600 Secs
3. High	1,000Rpm	500 Secs
4. Maximum	2,000Rpm	500 Secs

Rotor Cytology

Using centrifugal force to separate and deposit a monolayer of cells onto slides whilst maintaining integrity within a clearly defined area FROM ANY FLUID MATRIX. Cyto centrifugation also constructively flattens cells for excellent nuclear presentation.

Applications include Cytology, Histology, Haematology, Oncology, Immunochemistry, Serology & Microbiology.

Offering samples from 0.1ml to 6ml and an extensive range of accessories we have your Cytology needs covered.

Included



Rotor **BRK4420**

Rotor type (ml)	4x0.2 to 6
Tube size max (mm)	Single or Double
Minimum speed (Rpm)	200
Maximum speed (Rpm)	2,000
Maximum RCF (G)	550
Radius max (mm)	120
Sample tube angle (°)	0
Acceleration time (secs)	25
Deceleration time (secs)	25
Autoclaveable (frequency)	121°C (20)

Available



Rotor **BRK4430**

Rotor type (ml)	8x0.2 to 6
Tube size max (mm)	Single or Double
Minimum speed (Rpm)	200
Maximum speed (Rpm)	2,000
Maximum RCF (G)	550
Radius max (mm)	120
Sample tube angle (°)	0
Acceleration time (secs)	25
Deceleration time (secs)	25
Autoclaveable (frequency)	121°C (10)

Accessories



4446 Double holder 1ml



4444 Single Holder 1ml



4600 Double holder 6ml



4446 Stainless steel clip

Display indicative only

PrO-Equine

Equine centrifuge for AI, horse semen, embryo transfer, faeces & blood work.



Display indicative only

Dims (HWD mm)	275x325x470
Weight (Kg)	22 (without rotor)
Power (watts)	175
Rotor	BRK5505 Swing out
Speed (Rpm)	500 - 4,000
RCF Max (G)	2,200
Memory	10 Programs
Accel Rates	10 Programs
Decel Rates	10 Programs

Swing Out Rotor



Rotor **BRK5505**

Rotor type (ml)	4x100
Tube size max (mm)	45x100
Minimum speed (Rpm)	500
Maximum speed (Rpm)	4,000
Maximum RCF (G)	2,200
Radius max (mm)	123
Sample tube angle (°)	0
Acceleration time (secs)	25
Deceleration time (secs)	25
Autoclaveable (frequency)	121°C (10)



AF515 8x15ml












AF550 4x50ml

Other adaptors available - see page 11

Adaptor Chart

Adaptors for Swing out rotors

Adaptors

Tube type	Shape	Capacity	Size	To fit rotor BRK5505		
				Part nos	Nos of tubes Per rotor	
	Micro with cap	point	0.5ml	8x20	AM505	36
	Micro with cap	point	1.5ml	11x38	AM520	24
	Micro with cap	point	2.0ml	11x38	AM520	24
	Micro with cap	point	0.2ml	6x20	AM502	36
	Micro with cap	point	0.4ml	6x30	AM504	36
	Plain No cap	round	1ml	6x45	AR501	36
	Plain No cap	round	3ml	10x60	AR503	28
	Plain No cap	round	5ml	12x75	AR505*	28
	Plain No cap	round	6ml	12x82	AR505*	28
	Plain No cap	round	7ml	12x100	AR507*	28
	Plain No cap	round	9/10ml	14x100	AR509*	24
	Plain No cap	round	15ml	17x100	AR515*	8
	Plain No cap	round	25ml	24x100	AR525*	8
	Plain No cap	round	50ml	34x100	AR550*	4
	Plain No cap	round	100ml	45x100	AR5100*	4
	Plain No cap	round	150ml	52x100	N/A	
	Plain No cap	round	250ml	62x100	N/A	
	Falcon with cap	point	15ml	17x120	AF515*	8
	Falcon with cap	point	50ml	29x115	AF550*	4
	Falcon with cap	point	175ml	61x118	N/A	
	Falcon with cap	point	15ml	17x120	N/A	
	Corning with cap*	point	250ml	60x172	See K242/R	
	Corning with cap*	point	500ml	98x148	See K242/R	
	Falcon with cap	square	12ml	17x100	AFS512	8
	Falcon with cap	square	25ml	25x90	AFS525	4
	Falcon with cap	square	30ml	25x110	AFS530	4
	Falcon with cap	square	50ml	29x115	AFS550*	4
	Falcon with cap	square	15ml	17x120	N/A	N/A
	Nalgene/Oakridge	round	10ml	16x80	ANO510*	8
	Nalgene/Oakridge	round	30ml	26x95	ANO530*	4
	Nalgene/Oakridge	round	50ml	29x107	ANO550	4
	Nalgene/Oakridge	round	100ml	38x106	ANO585	4
	Nalgene/Oakridge*	flat	250ml	62x130	See K241/R	
	Nalgene/Oakridge*	flat	750ml	98x153	See K243/R	
	Monovette	square	1.1-1.4ml	8x82	AM5014	24
	Monovette	square	2.7-3ml	11x82	AM503	24
	Monovette	square	2.6-2.9ml	13x81	AM529	24
	Monovette	square	4.5-5ml	11x108	AM503*	24
	Monovette	square	7.5-8.2ml	13x106	AM579*	24
	Monovette	square	4.5-5ml	15x92	AM550*	20
	Monovette	square	7.5-8.2ml	15x108	AM550*	20
	Monovette	square	9-10ml	16x108	AM590*	20
	Vacutainer	round	1.6-5ml	13x75	AV516*	24
	Vacutainer	round	4-7ml	13x10	AV550*	16
	Vacutainer	round	8.5-10ml	16x100	AV580*	12

Note: - We can not be held responsible if the tube manufacturers change the design and/or size of the tube.

* Limited capacity with sealed bucket lids (B5419 and B5319)



**MADE IN BRITAIN
DISTRIBUTED WORLDWIDE**



**To review all our ranges
please visit our global website**

www.centurionscientificglobal.com



@CenturionSci



**/centurionscientific
global**

Centurion Scientific
Church Farm, Stoughton,
Chichester, West Sussex
PO18 9JL

Phone: 02392 631 225

Distributed by:

Manufactured by:

Centurion Scientific Ltd

email: info@centurionscientific.co.uk
www.centurionscientific.co.uk