

# Centrifuges : SW14

## Applications :

2 in 1 function  
 Medium volume centrifuge  
 Micro volume centrifuge  
 Designed to centrifuge up to 6x50ml large capacity tubes and 48x0.2ml microtubes.  
 Rotor quick-set system and intelligent function makes it simple to operate and reliable

## Benefits :

Brushless DC motor drive  
 Large LCD display run profile information  
 Automatic rotor recognition  
 Eye balancing samples  
 Bio safety Rotor

## Specifications :

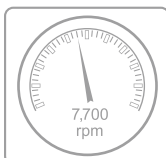
SW14: Ventilated  
 SW14R :Refrigerated. Temperature range from -20°C to 40°C  
 Adjustable rotation speed up to 14000 rpm  
 Controls by micro processor  
 9 centrifugation programs  
 Choice of 9 acceleration and deceleration settings allow delicate gradients and protect sensitive samples from abrupt speed changes.  
 timer 1 min - 99 hrs59min with hold function

# SW14

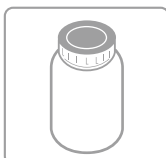


Reference	Name	Description	Dimensions (LxPxH) mm
<b>Bench top centrifuges</b>			
CENSW14000001	SW14	Bench top ventilated centrifuge	340x490x380
CENSW14000002	SW14R	Bench top refrigerated centrifuge	560x500x380

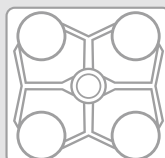
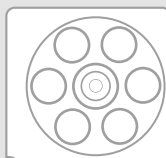
Max speed :  
14 000 tr/min



Designed to centrifuge  
0.2 to 50ml tubes



Fixed angle or Swing-out  
rotor



Cooled  
function  
option



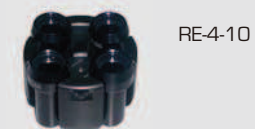
Sealed  
carriers





### Rotor Quick Set System

Rotor Quick Set System allows instant rotor exchange within seconds. No screws and no tools are needed to tie down and remove the rotor. Improves efficiency and enhances safety by minimizing screw-tightening human error.



RE-4-10



RA-48-02



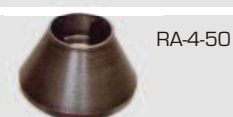
RA-8-10



RA-24-02



RA-6-50



RA-4-50

### 2-in-1 Design

Compact design makes the refrigerated high-speed centrifuge can hold medium volume rotor up to 6x50 ml tubes and microvolume rotor.



### Water Dripping Prevention

One whole piece of rubber cap sealing motor chamber hole and drive shaft.

Strong gasket O ring closely sealed the chamber hole

Large Absorption sponge is underneath the rubber cap for absorbing water



Bio Safety autoclavable Rotor TA 15-6-50 fully sealed to avoid the infection to escape of bio-contamination

Reference	Name	Max. speed (rpm)		Tubes Capacity		
		SW14	SW14R	Number	Volume	Dimensions diam x L (mm)
<b>Rotors</b>						
CENSW14000013	Micro Rotor RA-48-02	12,000	12,000	48	0.2 ml	6x24
CENSW14000015	Micro Rotor RA-24-02	14,000	14,000	24	0.2 ml 0.5 ml 1.5 ml 2.0 ml	6x24 8x32 10.5x41 10.5x42
CENSW14000016	Angle rotor RA-8-10	14,000	14,000	8	10 ml PP	15.5x81
CENSW14000017	Angle rotor RA-4-50	12,000	14,000	4	15 ml PP 15 ml conical 50 ml PP	16.5x113 17x119 29x106
CENSW14000018	Angle rotor RA-6-50	12,000	14,000	6	15 ml PP 15 ml conical 50 ml PP	16.5x113 17x119 29x106
CENSW14000019	Angle rotor RA-18-02	14,000	14,000	18	2 ml round bottom	
CENSW14000025	Angle rotor RA4-50T	10,000	10,000	4	50 ml conical bottom	
CENSW14000020	Swing out rotor RE-4-10	4,000	4,000	4	5 à 7 ml round bottom	
<b>Polypropylene Adapters</b>		Pour		Tubes		Qté
CENSW14000014	AD02	RA-24-2		0.2ml PCR		24
CENSW14000021	AD05	RA-24-2		0.5ml		24
CENSW14000022	AD15C	RA-6-50 RA-4-50		15ml conical bottom		6
CENSW14000023	AD15	RA-6-50 RA-4-50		15ml round bottom		6
CENSW14000024	AD15CT	RA-4-50T		15 ml conical bottom		6