

**CERTOMAT<sup>®</sup>**  
For controlled benchtop  
incubation

**DJB Labcare - Laboratory Equipment Specialist**  
[info@djblabcare.co.uk](mailto:info@djblabcare.co.uk) [www.djblabcare.co.uk](http://www.djblabcare.co.uk)  
01908 612598

## CERTOMAT® IS For controlled bench top incubation

The CERTOMAT® IS from Sartorius has proven its value in many laboratories world-wide. In microbiology, this benchtop shaking incubator allows bacteria or yeast cells to grow in a temperature-controlled environment from 8°C above ambient temperature up to +60°C.

It is thus ideally suited for the temperature range most commonly used in biology laboratories working with microorganisms. With an optional integrated cooling, the temperature range can be lowered to 10°C below ambient temperature.

Due to its compact design, the CERTOMAT® IS can also be used by molecular biologists having to expand their cultures beyond the petri dish size. As an additional benefit this unit can be programmed to operate for specified periods using defined ranges of speed and temperature.

For example, a pre-culturing stage and 4 successive incubation stages can easily be programmed.

Incubation of cultures on the bench has never been easier than with the CERTOMAT® IS.

Its small footprint and superior design make it the ideal incubator shaker for every laboratory.

For applications requiring larger incubation capacities you can expand using our CERTOMAT® BS-1 and CERTOMAT® BS-T incubator shakers.

### Benefits

Compact design

Fully programmable with up to 5 programmes, password-protected

Menu language selectable by the user

Integrated spill tray

Contact switch stops the shaker when lid is opened

Integrated active cooling system (UHK versions only)

Alarm points may be set by the user

RS 323 Interface

Accepts 3 liter flasks

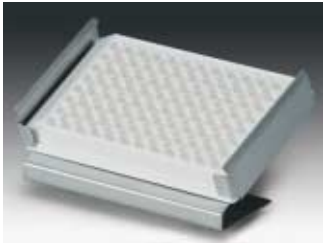


DJB Labcare - Laboratory Equipment Specialist  
info@djblabcare.co.uk www.djblabcare.co.uk  
01908 612598

## Accessories



Reference	Description
	<b>Tray type E (420×420 mm) equipped with stainless steel clamps for Erlenmeyer flasks</b>
885 3533	39 clamps for flasks 100 ml
885 3568	20 clamps for flasks 250 ml
885 3584	14 clamps for flasks 500 ml
885 3606	9 clamps for flasks 1,000 ml
	<b>Tray type E (420×420 mm) equipped with plastic clamps for Erlenmeyer flasks</b>
885 3688	39 clamps for flasks 100 ml
885 3666	19 clamps for flasks 250 ml
885 3677	14 clamps for flasks 500 ml
	<b>Universal tray to be completed with clamps, racks or mounting system Type EU (420×420 mm)</b>
885 3002	
	<b>Stainless steel clamps for tray type EU</b>
885 4505	for Erlenmeyer flasks 25 ml (max. 49)
885 4513	for Erlenmeyer flasks 50 ml (max. 48)
885 4521	for Erlenmeyer flasks 100 ml (max. 24)
885 4556	for Erlenmeyer flasks 250 ml (max. 17)
885 4572	for Erlenmeyer flasks 500 ml (max. 12)
885 4599	for Erlenmeyer flasks 1,000 ml (max. 8)
885 4610	for Erlenmeyer flasks 2,000 ml (max. 4)
885 4629	for Erlenmeyer flasks 3,000 ml (max. 4)
885 4564	for Fernbach flasks 450 ml (max. 8)
885 4600	for Fernbach flasks 1,800 ml (max. 4)
885 4640	for Fernbach flasks 2,800 ml (max. 4)
	<b>Plastic clamps reinforced with glass fibre</b>
885 4700	for Erlenmeyer flasks 100 ml (max. 24)
885 4711	for Erlenmeyer flasks 250 ml (max. 17)
885 4722	for Erlenmeyer flasks 500 ml (max. 12)
885 4733	for Erlenmeyer flasks 1,000 ml (max. 8)
	<b>Hinged racks for test tubes</b> (4 racks max. on tray EU)
885 3134	for 64 tubes Ø 14 mm
885 3142	for 42 tubes Ø 16 mm
885 3150	for 36 tubes Ø 18 mm
885 3169	for 33 tubes Ø 20 mm
885 3185	for 18 tubes Ø 25 mm
885 3177	for 16 tubes Ø 30 mm
	<b>Hinged racks for centrifugation tubes</b> (4 racks max. on tray EU)
885 3088	for 42 tubes Ø 16 mm
885 3096	for 36 tubes Ø 18 mm
885 3193	for 33 tubes Ø 20 mm
885 3240	for 16 tubes Ø 30 mm

**Reference****Description**

885 0321

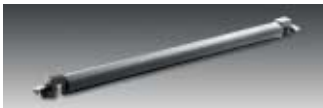
**Holders for microtiter plates, stainless steel**  
for 1 standard 96-well plate or deepwell plate  
standard plates: max. 12 holders on EU tray  
deepwell plates: max. 9 holders on EU tray

886 4497  
886 0416  
886 4470

**Sticky tape for universal trays**  
Standard, roll of 50 m, 30×1 mm  
Premium, roll of 10 m, 30×1 mm, repeated use  
Anti-skid layer, 380×450 mm, for individual cut

885 4238  
885 4254

**Universal mounting system**  
Basic element B-2 for tray EU  
Universal clamping rod for basic elements B-2

885 4262  
885 4270

**Mounting set for separation funnels  
in combination with universal mounting system (not shown)**  
for 5 separating funnels 50 or 100 ml  
for 3 separating funnels 250, 500 or 1,000 ml

886 1005  
886 1013  
886 1021  
886 1022

**Shaking flasks, DURAN, Erlenmeyer type,  
3 baffles at 120°, straight rim**  
Erlenmeyer flasks 300 ml, pack of 10  
Erlenmeyer flasks 500 ml, pack of 10  
Erlenmeyer flasks 1,000 ml, pack of 10  
Erlenmeyer flasks 2,000 ml, pack of 10

886 1064  
886 1072  
886 1080

**Shaking flasks, DURAN, Erlenmeyer type,  
3 baffles at 120°, straight rim, connector GL 14**  
Erlenmeyer flasks 300 ml, pack of 10  
Erlenmeyer flasks 500 ml, pack of 10  
Erlenmeyer flasks 1,000 ml, pack of 10



886 0998

**Shaking flasks, DURAN, Erlenmeyer type,  
3 baffles at 120°, narrow neck for plug**  
Erlenmeyer flasks 500 ml, pack of 10

## Technical Data

### Ordering information

CERTOMAT® IS version with circulation/heating (UH)		
230 V/50 Hz	886 4829	CERTOMAT® IS/25 mm
230 V/50 Hz	886 4926	CERTOMAT® IS/50 mm
115 V/60 Hz	886 4837	CERTOMAT® IS/25 mm
115 V/60 Hz	886 4934	CERTOMAT® IS/50 mm
CERTOMAT® IS version with circulation/heating/cooling (UHK)		
230 V/50 Hz	886 4845	CERTOMAT® IS/25 mm
230 V/50 Hz	886 4942	CERTOMAT® IS/50 mm
115 V/60 Hz	886 4853	CERTOMAT® IS/25 mm
115 V/60 Hz	886 4953	CERTOMAT® IS/50 mm

### Technical data

Mechanical	Shaking speed: Amplitude: Accuracy: Motor:	40 to 400 rpm 25 mm and 50 mm, convertible ±1% of max. value brushless motor, rotor external
Temperature	Temperature range: Version with cooling: Air circulation:	ambient +8 °C to +60 °C ambient -10 °C to +60 °C 1 fan, 180 m <sup>3</sup> /h
Trays	Suitable trays: Adjustment of speed and temperature: Display:	type E and EU (420×420 mm)  foil key pad LCD alphanumeric, 4 lines, 20 characters each
Safety	Memory: Alarm: Protection:	automatic restart after power failure acoustic and on LCD IP 21
Operating conditions	Temperature: Humidity:	from +10 °C to +45 °C from 10% to 90%, not condensing
Documentation	Analog output:	for speed and temperature
Electrical	Heating capacity: Cooling capacity:	650 W 300 W, cooled versions only
Dimensions and weight	External (L × H × D): Internal (L × H × D): Weight:	540×565×680 mm 505×370×510 mm 62 kg

All instruments are delivered without trays and other accessories.

For incubating cells or mixing liquids a tray is needed together with additional accessories to hold shaking flasks, separation funnels or tubes.

DJB Labcare - Laboratory Equipment Specialist  
info@djblabcare.co.uk www.djblabcare.co.uk  
01908 612598

Sartorius AG  
Weender Landstrasse 94-108  
37075 Goettingen, Germany

Phone +49.551.308.0  
Fax +49.551.308.3289

[www.sartorius.com](http://www.sartorius.com)

Sartorius BBI Systems GmbH  
Schwarzenberger Weg 73-79  
34212 Melsungen, Germany

Phone +49.5661.71.3400  
Fax +49.5661.71.3702

[www.sartorius-bbi-systems.com](http://www.sartorius-bbi-systems.com)

Sartorius North America Inc.  
131 Heartland Blvd.  
Edgewood, New York 11717, USA

Phone +1.631.254.4249  
Toll-free +1.800.3687178  
Fax +1.631.254.4253

Sartorius BBI Systems, Inc.  
2800 Baglyos Circle  
Bethlehem, PA 18020, USA

Phone +1.610.866.4800  
Fax +1.610.866.4890

Sartorius Ltd.  
Longmead Business Park  
Blenheim Road, Epsom  
Surrey, KT19 9 QQ, U.K.

Phone +44.1372.737159  
Fax +44.1372.726171

Sartorius S.A.  
4, rue Emile Baudot  
91127 Palaiseau Cedex, France

Phone +33.1.6919.2100  
Fax +33.1.6920.0922

Sartorius S.p.A.  
Via dell'Antella, 76/A  
50011 Antella (FI), Italy

Phone +39.055.63.40.41  
Fax +39.055.63.40.526

Sartorius, S.A.  
C/Isabel Colbrand 10-12  
Planta 4, Oficina 121  
Polígono Industrial de Fuencarral  
28050 Madrid, Spain

Phone +34.91.3586091  
Fax +34.91.3588804

Sartorius Technologies N.V.  
Luchthavenlaan 1-3  
1800 Vilvoorde, Belgium

Phone +32.2.756.0670  
Fax +32.2.756.0681

Sartorius K.K.  
KY Building, 8-17  
Kitashinagawa 1-chome  
Shinagawa-ku  
Tokyo 140-0001, Japan

Phone +81.3.3740.5407  
Fax +81.3.3740.5406

Specifications subject to change  
without notice.

Printed in Germany on paper that has been  
bleached without any use of chlorine.

W/sart-000 · G

Publication No.: SB-1019-e05023

Order No.: 85030-514-30

**DJB Labcare - Laboratory Equipment Specialist**  
**info@djblabcare.co.uk** **www.djblabcare.co.uk**  
**01908 612598**