

# B4i - BR4i



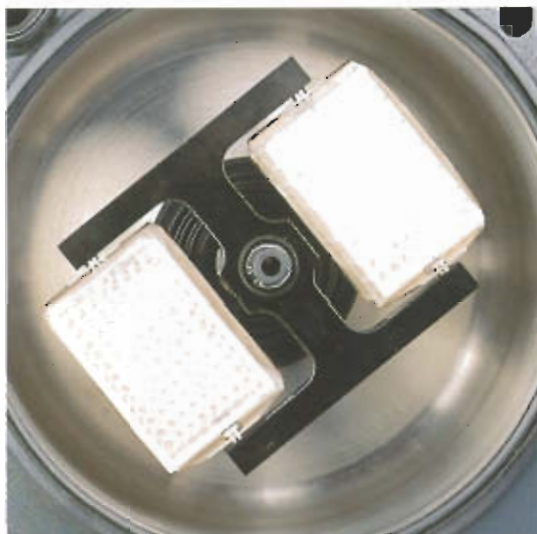
4 x 200 ml  
MULTI-FUNCTION  
BENCH TOP CENTRIFUGES



DJB Labcare - The UK's Leading Centrifuge Specialist  
info@djblabcare.co.uk www.djblabcare.co.uk  
01908 612598

With AUTO-LOCK

# THE MULTI-USE CENTRIFUGES



## IDEAL FOR CLINICAL BIOLOGY VERSATILE IN RESEARCH AND INDUSTRY

Whatever type of sample you have to prepare, using blood tubes, with biological analysis, cytology slides, microtitre plates, cell cultures...

- 20 x 7 ml - 28 x 15 ml - 60 x 1.5 ml
- Rapid rotor exchange
- Only 58 dBA at 3000 rpm
- Simple to use
- Maintenance-free induction motor

The B4i and BR4i centrifuges will simplify your work

- 5 personalized memories
- Fast acceleration and braking
- Pulse key for short runs
- Pre-cool function
- Sealed buckets for biological safety

DJB Labcare - The UK's Leading Centrifuge Specialist  
info@djblabcare.co.uk www.djblabcare.co.uk 01908 612598





## BIOLOGICAL SAFETY

An end to biological risks when handling your samples. For your personal safety, centrifuge the tubes, bottles and microplates in total security with accessories successfully tested by the C.A.M.R., Porton Down for microbial integrity according to the G.J. Harper test cited in the IEC 1010-2-020 standard.

Imbalance detector and lid interlock ensure full operator protection.

## SAMPLE PROTECTION

+4° C at full speed.

The refrigeration system in the BR4i is designed for intensive use, even in a warm laboratory.

Precooling of the instrument is obtained through a dedicated program.



## ENVIRONMENTAL PROTECTION

The refrigerant fluid and insulation, totally devoid of chlorinated products (CFC, HCFC), are absolutely safe for the ozone layer.



DJB Labcare - The UK's Leading Centrifuge Specialist  
info@djblabcare.co.uk www.djblabcare.co.uk  
01908 612598

## SWING-OUT ROTORS & ACCESSORIES

Catalogue number	Rotor	Description	Capacity	Tube dim. mm	Rad. mm	Max speed r.p.m	Max RCF (x g)	Angle deg.
11175610	S40	Swing-out rotor	4 x 200 ml	Ø 57	161	B4i: 4000 BR4i: 4100	B4i: 2880 BR4i: 3026	90
11175611		Set of 4 buckets	200 ml	Ø 57	161	4100	3026	
11175612		4 sealing lids						
41193271		6 PP bottles with cap	200 ml	56.5 x 112	161	4100	3026	
11174181		Set of 4 inserts	1 x 100 ml	45 x 118	161	4100	3026	
11174501		Set of 4 inserts	1 x 50 ml	33 x 120	161	4100	3026	
11174528		Set of 4 inserts	1 x 50 ml conical	30 x 116	161	4100	3026	
11174526		Set of 4 inserts	1 x 25 ml glass Universal	29 x 85	161	4100	3026	
11174527		Set of 4 inserts	1 x 25 ml plastic Universal	25 x 85	161	4100	3026	
11174502		Set of 4 inserts	3 x 20 ml	Ø 22	161	4100	3026	
11174537		Set of 4 inserts	3 x 15 ml conical	17 x 122	161	4100	3026	
11174183		Set of 4 inserts	7 x 15 ml	Ø 17	161	4100	3026	
11174509		Set of 4 inserts	3 x 12 ml	Ø 17.5	161	4100	3026	
11174503		Set of 4 inserts	5 x 10 ml	16 x 116	161	4100	3026	
11174534		Set of 4 inserts	5 x 25/210.5/10 ml	17 x 60/105	161	4100	3026	
11174533		Set of 4 inserts	5 x 25.5 ml	17 x 60	161	4100	3026	
11174504		Set of 4 inserts	5 x 5 - 7 ml	Ø 13.5	161	4100	3026	
11174505		Set of 4 inserts	9 x 5 - 6 ml	Ø 13.5	161	4100	3026	
11174577		Set of 4 inserts	12 x 5 ml ouvert	Ø 12.5	161	4100	3026	
11174506		Set of 4 inserts	12 x 3 - 5 ml	Ø 12	161	4100	3026	
11174508		Set of 4 inserts	6 x 1.5 - 2 ml	11 x 39	161	4100	3026	
11175613		Set of 2 cytobuckets	3 cyto samples per bucket		118	4100	2218	90
11175630	S20	Swing-out rotor with carriers	6 x microplates or 2 x blocks		115	4100	2160	90
11175631		2 sealed carriers	2 x 2 microplates					
11174207		Rubber cushion for flexible microtitre plates						

Note: the maximum RCF applied to tubes in the inserts of the S40 is 2880 x g for the B4i.

## ANGLE ROTORS

Catalogue number	Rotor	Description	Capacity	Tube dim. mm	Rad. mm	Max speed r.p.m	Max RCF (x g)	Angle deg.
11175636	AB 15.4	Angle rotor	30 x 15 ml	17.5 x 100	136	B4i: 4000 BR4i: 4100	B4i: 2416 BR4i: 2537	37
11175636	AB 50.10	Angle rotor	6 x 50 ml con./round	29.5 x 118	112	10000	12820	40
11174999		Set of 8 adaptors	1 x 30 - 38 ml	23.5 x 92	95	10000	10620	
11174606		Set of 4 adaptors	1 x 15 ml conique	17.5 x 122	112	10000	12520	
11177378		Set of 4 adaptors	1 x 10 ml	16 x 80	94	10000	10174	
11175637	AB 10.12	Sealed angle rotor	10 x 10 ml	16 x 80	85	12000	13684	40
11174607		Set of 10 adaptors	1 x 6 ml	13 x 100	80	12000	12879	
11174603		Set of 10 adaptors	1 x 1.5 - 2 ml	11 x 39	64	12000	10303	
11175639	AB 1.14	Angle rotor + lid	20 x 1.5 ml	11 x 39	78	14000	17092	46
11175641	AB 2.14	Sealed angle rotor	24 x 1.5 ml	11 x 39	84	14000	18407	46
41174928		Set of 20 adaptors	1 x 500 - 800 µl	Ø 8				
11174631		Set of 20 adaptors	1 x 200 µl PCR	Ø 6.5				
41174938		Set of 20 adaptors	1 x 250 / 400 / 700 µl	Ø 6				

## DRUM ROTOR

Catalogue number	Rotor	Description	Capacity	Tube dim. mm	Rad. mm	Max speed r.p.m	Max RCF (x g)	Angle deg.
11175643	DB 6.11	Drum rotor	6 racks		72	11000	11400	90
11174561		1 rack	10 x 1.5 - 2 ml	Ø 11				
11174573		1 rack	20 x 500 - 800 µl	Ø 8				
11174574		1 rack	20 x 700 µl	Ø 6				
11174563		1 rack	21 x 600 µl	Ø 6				
11174562		1 rack	32 x 250 - 400 µl	Ø 6				

Note: rotor performance may be limited by the tube performance as stated by the tube manufacturer.

DJB Labcare - The UK's Leading Centrifuge Specialist  
 info@djblabcare.co.uk www.djblabcare.co.uk 01908 612598





## TIME SAVING

Save time in frequently used routines with direct recall of programs. Press just one key and you are ready to start.

Short acceleration and braking times (with the chance to extend these over 5 rates, if your samples demand), a PULSE key for very short runs, elevated performance (18,400 x g for microtubes), rotor exchange in a few seconds ...

Centrifugation becomes a pleasure.

## SIMPLE TO OPERATE

Operation of the B4i series is obvious.

It combines simplicity and versatility.

For your daily operations, the B4i memorizes your protocols whose names you have clearly written beside each direct recall key.

For protocol adjustment, you can even modify the set values during the run.

## ECONOMICAL & SPACE SAVING

In less than 5 seconds you can install one of the 8 rotors, thanks to the patented AUTO-LOCK system.

The multi-function B4i series combines the possibilities of several machines for the price of a single unit.



## SPECIFICATIONS

Max. speed	Swing-out B4i : 4 000 rpm - BR4i : 4 100 rpm - Angle 14 000 rpm		
Max. RCF	Swing-out B4i : 2 880 x g - BR4i : 3 026 x g - Angle 18 407 x g		
Max. capacity	Swing-out 4 x 200 ml - Angle 6 x 50 ml		
Precise control of all parameters ensured by microprocessor			
Displays (speed, T°, time, rates)	High visibility digital displays		
Memory size	5 personalized programs with direct recall key		
Speed	Range	500 to 14 000 rpm	
	Step	10 rpm - 100 rpm	
	Accuracy	± 20 rpm	
Timer	Range	30 sec. to 99 min + Hold position	
	Step	30 sec. - 1 min	
Acceleration / Braking rates	5 / 5		
Temperature	Range	<b>B4i</b>	<b>BR4i</b>
	Step		-9°C to +40°C
	Accuracy		1°C
	Typical performance	Increase limited to + 3°C to + 10°C (max. speed)	+ 4°C at 4 000 rpm (4 x 200 ml) + 1°C at 14 000 rpm (20 x 1.5 ml)
Motor	Maintenance-free, brushless induction motor		
Dimensions (H x W x D)		<b>B4i</b>	<b>BR4i</b>
	Packed (H x W x D)	372 x 400 x 492 mm 540 x 600 x 640 mm	375 x 575 x 605 mm 710 x 590 x 720 mm
Weight (Uncrated / Crated)		40 / 52 kg	72 / 85 kg
Average / Max. power		350 / 500 W	550 / 800 W



## CATALOGUE NUMBERS

230 V - 50 / 60 Hz	<b>B4i</b> 11175600	<b>BR4i</b> 11175603
120 V - 60 Hz	11175601	11175604



The quality of the product  
The quality of customer service  
The quality of the maintenance

FRANCE : JOUAN S.A. - 10, rue Duguesy Trouin - 44907 SAINT-HERBLAIN Cedex  
Tel +33 (0) 2 28 03 20 00 - Fax +33 (0) 2 28 03 20 01 - Tlx 711062  
e-mail : [jouan@jouan.com](mailto:jouan@jouan.com) - Internet : [www.jouan.com](http://www.jouan.com)

U.S.A. : JOUAN Inc. - Tel (540) 869 8623 - Toll Free (800) 662 7477 - Fax (540) 869 8626  
e-mail : [info@jouaninc.com](mailto:info@jouaninc.com)

GERMANY : JOUAN GmbH - Tel (089) 615 5906 - Fax (099) 615 59077  
e-mail : [jouan.gmbh@t-online.de](mailto:jouan.gmbh@t-online.de)

U.K. : JOUAN Ltd - Tel (0115) 944 7989 - Fax (0115) 944 7080 - e-mail : [jouan@enterprise.net](mailto:jouan@enterprise.net)

ITALY : A.L.C. International Srl - Fax/Tel (02) 2538922 - e-mail : [jouan@jouan.it](mailto:jouan@jouan.it)

RUSSIA : JOUAN Moscow - Fax/Tel (095) 211 4856 - e-mail : [jouan.mp@g23.telcom.ru](mailto:jouan.mp@g23.telcom.ru)

UKRAINE : JOUAN Kiev - Fax/Tel (044) 224 42 53 - e-mail : [jouan@biochem.kiev.ua](mailto:jouan@biochem.kiev.ua)

DJB Labcare - The UK's Leading Centrifuge Specialist  
[www.djblabcare.co.uk](http://www.djblabcare.co.uk)  
 info@djblabcare.co.uk 01908 612598

JOUAN continuously improves its products. Your equipment might therefore differ from its description as given in this leaflet. Cat. N° : 89001148