

**Thermo Scientific
Sorvall® Legend®
T Plus and RT Plus
Centrifuge Series**



**Unmatched versatility,
exceptional throughput**



Introducing the next great Legend in sample preparation.

From the world leader in serving science comes a breakthrough in tabletop centrifuge performance. The Thermo Scientific Sorvall® Legend® T Plus and RT Plus Centrifuge Series delivers unprecedented speed and capacity together with the widest range of rotors and adapters available for a premium three-liter centrifuge. Supporting both research and clinical separation needs, our Sorvall Legend T Plus and RT Plus Series easily accommodates blood collection tubes, conical tubes, flasks, and microtubes, while four ultra-light carbon fiber rotors allow you to process more samples more quickly than ever before – freeing you to focus on results.





Push your productivity to the next level with high-capacity accessories

The Sorvall Legend T Plus and RT Plus offer industry-leading capacity and performance for a three liter tabletop centrifuge. Rotor systems designed to handle up to 108x5/7 ml blood collection tubes, 28x50 ml conical tubes or 6x250 ml bottles in a single run allow you to achieve greater levels of productivity.

Fast track sample throughput with unmatched versatility

Nine swinging-bucket rotor configurations and seven fixed-angle rotors give the Sorvall Legend T Plus and RT Plus unmatched versatility, making it a cost-effective investment for any lab.



Enhanced user and sample safety

The Sorvall Legend T Plus and RT Plus include numerous features to ensure the safety of you and your samples.

- The SMARTspin® imbalance detection system allows for eye balancing of samples with automatic termination of a run if excessive imbalance occurs
- Automatic rotor recognition ensures precise rotor performance while preventing the use of incorrect rotors or parameters

Modular, ergonomic design

The Sorvall Legend T Plus and RT Plus are designed with lower deck heights for easy loading and unloading of samples. The unique soft-touch lid effortlessly clicks into place for worry-free centrifugation

User-friendly operation

The EASYset™ soft-touch keypad allows for one-touch control of speed, programming and pre-cooling functions. A bright, easy-to-read LED display allows easy monitoring from across the lab.



Exceptional reliability

The brushless induction drive system of the Sorvall Legend T Plus and RT Plus guarantees years of dependable performance with minimal maintenance, along with whisper-quiet operation, and powerful acceleration and braking.

New carbon fiber rotors from FIBERLite® provide an advanced alternative to traditional metal rotors. Lightweight and easy to handle, these rotors generate less wear on the centrifuge motor and are resistant to corrosion, fatigue, and repeated autoclaving.



Process more samples in less time

- Cut processing times in half and double your throughput with high-capacity carbon fiber rotors
- Spin up to 14x50ml conical tubes in a single run
- Achieve super speed performance with RCFs up to 24000xg on the benchtop
- Safely perform high RCF, single-step preparation using sterile, disposable conical tubes



Thermo Scientific Sorvall Legend T Plus and RT Plus Rotors and Accessories



Sorvall Legend T/RT Plus (120V)

Sorvall Legend T/RT Plus (230V)

TTH-750 High-Capacity Swing-Out Rotor							
Description	Rotor Capacity	Max Tube Dimensions Diam x Length (mm)	Max Speed (rpm)	Max RCF (x g)	Max Speed	Max RCF	Catalog Number
					(rpm)	(x g)	
					T/RT	T/RT	
TTH-750 High-Capacity Swing-Out Rotor							75006445
Buckets (sold individually unless otherwise noted)							
Round buckets, 4 x 750 ml	4 x 750 ml	100 x 136	4150	3700	4350 / 4600	4080 / 4570	75006441
Sealing lids for round buckets (set of 2)							75006421
Rectangular buckets, 4 x 250 ml	4 x 250 ml	62 x 120	3750	2990	4350 / 4600	4020 / 4490	75006446
Sealing lids for rectangular buckets (set of 2)							75006448
Tissue culture T-75 horizontal flask carrier ¹	4 x T-75 ml	60 x 127	4150	3060	4150 / 4150	3060 / 3060	75006451
Microplate carrier	4 x 4 standard (16) / 4 x 1 deepwell (4)	60 x 127	4150	3060	4350 / 4600	3360 / 3760	75006449
Tissue culture 250 ml conical bottle carrier	4 x 250 ml	62 x 173	3750	3350	4350 / 4600	4510 / 5040	75006497
Bucket, 25 x 5/7 ml blood collection tubes	100 x 5/7 ml						75006470
Bucket, 20 x 10 ml blood collection tubes	80 x 10 ml						75006471
Bucket, 17 x 15 ml disposable conical tubes	68 x 15 ml	19 x 119	4350	4083	4350 / 4600	4083 / 4566	75002023
Bucket, 7 x 50 ml disposable conical tubes	28 50 ml	29 x 115	4350	4083	4350 / 4600	4083 / 4566	75002024
Bucket, 1 x Aerosolve[®] canister	4						75006440
Adapters for round bucket, 75006441 (sold individually unless otherwise noted)							
250 ml flat-bottomed bottle	4 x 250 ml	62 x 140					75008144
225/175 ml disposable conical bottle	4 x 225 ml	62 x 140					75008144 + 03095 ²
50 ml round-bottomed tube	28 x 50 ml	29 x 123					75006493
50 ml disposable conical tube (sold as set of 4)	28 x 50 ml	29 x 115					11210826
50 ml disposable skirted-conical tube	28 x 50 ml	29 x 115					75006533
15ml standard tube	76 x 15 ml	17 x 122					75008135
10/15 ml blood collection tube	68 x 10/15 ml	16 x 125					75008136
15 ml disposable conical tube	48 x 15 ml	19 x 119					75008137
10 ml blood collection tube (sold as set of 4)	84 x 10 ml	16 x 100					11210821
5/7 ml blood collection tube (sold as set of 4)	108 x 5/7 ml	13 x 75 / 13 x 100					11210822
7 ml standard tube	140 x 7 ml	13 x 122					75008133
1.5/2.0 ml disposable microtubes	192 x 1.5/2 ml	11 x 42					75008132
T-75 Nunc [™] EasyFlask (sold as set of 2)	4 x T-75 ml						75008383
T-25 Nunc EasyFlask (sold as set of 2)	4 x T-25 ml						75008384
Adapters for rectangular bucket, 75006446 (sold individually)							
250 ml flat-bottomed bottle	4 x 250 ml	62 x 120					75006465
50 ml round-bottomed tube	16 x 50 ml	29 x 123					75006491
50 ml disposable conical or skirted tube	16 x 50 ml	29 x 115					75006461
10/15 ml standard / blood collection tube	64 x 10/15 ml	17 x 112					75006455
15 ml disposable conical tube	36 x 15 ml	19 x 119					75006456
5/7ml blood collection tube	80 x 5/7 ml	13 x 75 / 13 x 100					75006454 + 75005253 ²
7 ml standard tube	112 x 7 ml	13 x 113					75006453
1.5/2.0 ml disposable microtubes	224 x 1.5/2.0 ml	11 x 42					75006452

1. Suitable for Nunc EasyFlask, Greiner Cell Star, and Cell Coat Flasks)

2. Both adapters must be used

Bioshield [®] Windshielded Swinging Bucket Rotor							
Description	Rotor Capacity	Max Tube Dims	Max Speed (rpm)	Max RCF (x g)	Max Speed	Max RCF	Catalog Number
					(rpm)	(x g)	
Bioshield Windshielded Swinging Bucket Rotor, 4 x 250					5350/5850	5820/6960	75006435
Adapters for Bioshield rectangular bucket (sold individually)							
250 ml flat-bottomed bottle	4 x 250 ml	62 x 120					75006465
50 ml round-bottomed tube	16 x 50 ml	29 x 123					75006491
50 ml disposable conical or skirted tube	16 x 50 ml	29 x 115					75006461
10/15 ml standard / blood collection tube	64 x 10/15 ml	17 x 112					75006455
15 ml disposable conical tube	36 x 15 ml	19 x 119					75006456
5/7 ml blood collection tube	80 x 5/7 ml	13 x 75 / 13 x 100					75006454 + 75005253 ²
7 ml standard tube	112 x 7 ml	13 x 113					75006453
1.5/2.0 ml disposable microtubes	224 x 1.5/2.0 ml	11 x 42					75006452

2. Both adapters must be used

HIGHplate [®] Windshielded Microplate Rotor							
Description	Rotor Capacity	Max Tube Dims	Max Speed (rpm)	Max RCF (x g)	Max Speed	Max RCF	Catalog Number
					(rpm)	(x g)	
HIGHplate Windshielded Microplate Rotor					5250 / 5650	5085 / 5890	75006444



F14-6x250LE Carbon Fiber Large Volume Rotor

Description	Rotor Capacity	Max Tube Dimensions Diam x Length (mm)	Max Speed (rpm)	Max RCF (x g)	Max Speed	Max RCF	Catalog Number
					(rpm)	(x g)	
F14-6x250LE Carbon Fiber Large Volume Rotor	6 x 250 ml	61 x 124	10000	15316	10000 / 11000	15316 / 18533	75006517
Adapters for F14-6x250LE Large Volume Rotor (set of 2)							
50 ml disposable conical tubes	6 x 250 ml	29 x 115					75100136
15 ml Disposable conical tubes	30 x 15 ml	19 x 119					75101073

Fixed Angle Rotor

Description	Rotor Capacity	Max Tube Dims	Max Speed (rpm)	Max RCF (x g)	Max Speed	Max RCF	Catalog Number
					(rpm)	(x g)	
Fixed Angle Rotor, 6 x 94 ml	6 x 94 ml	38 x 114	10500 / 12000	12450 / 16260	10500 / 12000	12450 / 16260	75003334
Adapters for 6 x 94 ml Fixed Angle Rotor (sold individually)							
50 ml round-bottomed tube	6 x 50 ml	29 x 114					75003102
38 ml round-bottomed tube	6 x 38 ml	25 x 104					75003094
16 ml round-bottomed tube	6 x 16 ml	18 x 114					76002906
12 ml round-bottomed tube	12 x 12 ml	16 x 89					75003093
6.5 ml round-bottomed tube	12 x 6.5 ml	13 x 108					75003092
3.5 ml round-bottomed tube	24 x 3.5 ml	11 x 91					75003091
1.5 ml conical microtube	24 x 1.5 ml	11 x 42					76002905

F13-14x50c Carbon Fiber Conical Tube Rotor

Description	Rotor Capacity	Max Tube Dims	Max Speed (rpm)	Max RCF (x g)	Max Speed	Max RCF	Catalog Number
					(rpm)	(x g)	
F13-14x50c Carbon Fiber Conical Tube Rotor	14 x 50 ml	29 x 115	9000	13855	9000 / 10000	13855 / 17105	75006526
Adapters for 14x50c Conical Tube Rotor (set of 2)							
15 ml disposable conical tube	14 x 15 ml	19 x 119					75100378

F15-8x50c Carbon Fiber Conical Tube Rotor

Description	Rotor Capacity	Max Tube Dims	Max Speed (rpm)	Max RCF (x g)	Max Speed	Max RCF	Catalog Number
					(rpm)	(x g)	
F15-8x50c Carbon Fiber Conical Tube Rotor	8 x 50 ml	29 x 115	12000	16743	14000 / 14500	22789 / 24446	75006516
Adapters for 8x50c Conical Tube Rotor (set of 2)							
15 ml disposable conical tube	8 x 15 ml	19 x 119					75100378

Highconic Rotor

Description	Rotor Capacity	Max Tube Dims	Max Speed (rpm)	Max RCF (x g)	Max Speed	Max RCF	Catalog Number
					(rpm)	(x g)	
Highconic Rotor, 6 x 50 ml	6	29 x 115	8500	10020	8500	10020	75003057
Adapters for 6 x 50 ml Highconic Rotor (sold individually)							
50 ml disposable conical tube (6 Adapters Included with Rotor)	6 x 50 ml	29 x 115					75003103
50 ml round-bottomed tube	6 x 50 ml	29 x 118					75003102
38 ml round-bottomed tube	6 x 38 ml	25 x 112					75003094
16 ml round-bottomed tube	6 x 16 ml	18 x 124					76002906
15 ml disposable conical tube	6 x 15 ml	19 x 119					75003095
12 ml round-bottomed tube	12 x 12 ml	16 x 96					75003093
6.5 ml round-bottomed tube	12 x 6.5 ml	13 x 108					75003092
3.5 ml round-bottomed tube	24 x 3.5 ml	11 x 103					75003091
1.5 ml round-bottomed tube	24 x 1.5 ml	11 x 42					76002905

F21-48x1.5/2.0 ml Carbon Fiber Microtube Rotor

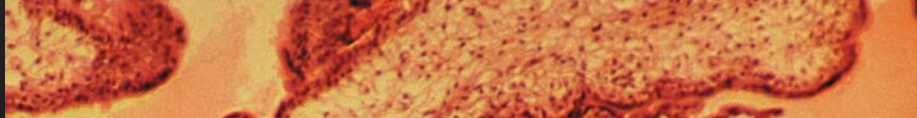
Description	Rotor Capacity	Max Tube Dims	Max Speed (rpm)	Max RCF (x g)	Max Speed	Max RCF	Catalog Number
					(rpm)	(x g)	
F21-48x1.5/2.0 ml Carbon Fiber Microtube Rotor	48 x 1.5/2.0 ml	11 x 42	15000	24400	15000	24400	75006527

Microliter Rotor (RT Plus only)

Description	Rotor Capacity	Max Tube Dims	Max Speed (rpm)	Max RCF (x g)	Max Speed	Max RCF	Catalog Number
					(rpm)	(x g)	
Microliter Rotor, 24 x 1.5/2.0 ml	24 x 1.5/2.0 ml	11 x 42	15000³	21890³	15000³	21890³	75003332
Adapters for microliter rotor							
0.5/0.6 ml microliter tubes (24/pkg)	24 x 0.5/0.6 ml	8 x 42					76003758
0.24/0.4 ml microliter tubes (24/pkg)	24 x 0.24/0.4 ml	6 x 38					76003759
0.2 ml microliter tubes (24/pkg)	24 x 0.2 ml	6 x 38					76003750

3. RT only

Note: Sorvall Legend T/RT centrifuges manufactured prior to 2007 may require a software upgrade to operate carbon fiber rotors. Please contact your sales or service representative to obtain a part number and pricing where applicable.



Thermo Scientific Sorvall Legend T Plus and RT Plus Centrifuge Series Specifications



Specifications	Sorvall Legend T Plus	Sorvall Legend RT Plus
Max Capacity	4 x 750 ml (or 4 x 4 microplates)	4 x 750 ml (or 4 x 4 microplates)
Max RCF	24,400 x g	24,400 x g
Control System	Microprocessor via EASYset (Soft-Touch Keypad)	Microprocessor via EASYset (Soft-Touch Keypad)
Programs	4 user programs	4 user programs
Speed Range	300 - 15,000 adjustable in 10 rpm increments	300 - 15,000 adjustable in 10 rpm increments
Drive System	Brushless induction	Brushless induction
Pre-Cooling Function	1 pre-temp program	1 pre-temp program
Functions	RCF pre-selection, quick-on, automatic rotor recognition and imbalance detection	RCF pre-selection, quick-on, automatic rotor recognition and imbalance detection
Max Noise Level	< 66 db(A)	< 55 db(A)
Run Time	0 - 9 hrs. 59 mins., continuous operation	0 - 9 hrs. 59 mins., continuous operation
Temperature Range	N/A	-9°C to 40°C, CFC-free refrigerant
Safety	Lid lock and lid interlock (2 automatic lid locks)	Lid lock and lid interlock (2 automatic lid locks)
Standards	EN 61 010-1, EN 61 010-2-020 CE marked, CSA approved	EN 61 010-1, EN 61 010-2-020 CE marked, CSA approved
Electrical	120 V (60 Hz), 230 V (50/60 Hz)	120 V (60 Hz), 230 V (50/60 Hz)

Ordering Information	Sorvall Legend T Plus	Sorvall Legend RT Plus
Catalog Numbers		
120 V (60 Hz)	75004367	750004377
230 V (50/60 Hz)	75004363	750004373
Accessory Carts		
Benchtop	76000077	75000075
Underbench	76000078	76000076
Product Dimensions		
Height (lid closed) [cm / in]	36.2 / 14.3	36.2 / 14.3
Width [cm / in]	55.1 / 21.7	73.3 / 28.7
Depth [cm / in]	66.6 / 26.2	66.6 / 26.2
Weight [kg / lb]	89 / 196	131 / 288

A History of Performance and Reliability

For more than 50 years, our Thermo Scientific Sorvall centrifuges have stood for outstanding performance and reliability in the lab. That tradition continues today. From basic benchtop instruments to advanced floor models, we take pride in manufacturing centrifuges that deliver reliable operation and consistent results year after year.

Worldwide Service and Support

We are committed to keeping your lab equipment working at peak performance levels. Our goal is to help you lower ownership costs, manage labs more effectively, and increase productivity. Contact your local account representative to learn more about our service offerings, including service agreements, preventive maintenance, on-site field repair, depot repair, compliance services and educational services.

©2007 Thermo Fisher Scientific Inc. All rights reserved. All trademarks are the property of Thermo Fisher Scientific Inc. and its subsidiaries. Specifications, terms and pricing are subject to change. Not all products are available in all countries. Please consult your local sales representative for details.